



**POWERING PROGRESS,
TOGETHER.**



www.pch-ksa.com



About US



Power & Control House (PCH) is a distinguished provider of innovative electrical solutions and control panel systems, dedicated to enhancing operational efficiency across a diverse spectrum of sectors, including industrial, commercial, and utility markets. With decades of cumulative industry experience, we specialize in the design, manufacturing, and delivery of high-quality electrical panels, control systems, electrical metering solutions, SCADA systems, Power Management Systems (PMS), security equipment control, and advanced lighting solutions tailored to meet the unique operational requirements of our clients. Our unwavering commitment to excellence, safety, and reliability empowers businesses to improve productivity, reduce operational costs, and achieve their strategic objectives.

At PCH, we cultivate a culture of continuous improvement, sustainability, and innovation. Our team of highly skilled engineers and technicians brings a wealth of knowledge and expertise to every project, ensuring that even the most complex challenges are met with precision and care. We leverage cutting-edge technology and industry best practices to deliver innovative solutions that not only meet but exceed client expectations while minimizing environmental impact.

Our Pillars

OUR MISSION

At Power & Control House (PCH), our mission is to deliver world-class electrical panel solutions that empower industries through safe, efficient, and innovative power and control systems. We are committed to enhancing operational efficiency and reliability for our clients, thereby enabling them to meet their strategic objectives and achieve long-term success. We aim to be at the forefront of technological advancements, offering solutions that not only meet but exceed industry standards. Through continuous improvement and a client-centric approach, we strive to build lasting relationships based on trust, integrity, and mutual success.

OUR VISION

Our vision is to become the most trusted and reliable partner in electrical control and power distribution solutions. We aspire to drive progress in the industrial, commercial, and infrastructure sectors by providing cutting-edge technologies and exceptional service. Our goal is to be recognized as a leader in the industry, known for our innovative solutions, unparalleled quality, and unwavering commitment to customer satisfaction. We envision a future where our contributions help shape a more efficient, sustainable, and technologically advanced world, positively impacting the communities we serve.





OUR PEOPLE



Our greatest strength lies in our people. At Power & Control House Factory, we are proud to have a team of highly skilled engineers, technicians, and support staff who are united by a shared commitment to excellence and innovation. Our diverse workforce combines technical expertise and extensive industry experience with a passion for delivering high-quality, customized solutions tailored to meet the unique needs of our clients. We foster a collaborative and inclusive work environment that encourages continuous learning, growth, and professional development. Our team is dedicated to tackling the most complex challenges with precision and care, ensuring that we remain at the cutting edge of the industry. We believe in the power of teamwork and the value of every individual's contribution, recognizing that our collective success is built on the talents and dedication of our people.

Our Team



ELECTRICAL & MECHANICAL ENGINEERS

Our team of seasoned electrical engineers excels in designing and implementing advanced electrical systems that meet client specifications and industry standards. They ensure optimal performance and safety, leveraging their extensive knowledge to deliver cutting-edge solutions.



PROJECT MANAGERS

Our project managers are the backbone of project execution, overseeing every aspect from initial planning to final delivery. They ensure that timelines are adhered to, budgets are met, and client expectations are consistently exceeded through effective communication and coordination.



TECHNICAL SPECIALISTS

Experts in automation, renewable energy solutions, and system integration, our technical specialists provide invaluable insights during project planning and implementation. Their expertise ensures that our solutions are both innovative and efficient, meeting the highest standards of quality and sustainability.



CUSTOMER SERVICE REPRESENTATIVES

Our dedicated customer service team is committed to client satisfaction, always ready to address inquiries, provide support, and facilitate seamless communication between our clients and technical teams. Their dedication ensures a positive and responsive client experience.



QUALITY ASSURANCE PROFESSIONALS

Our quality assurance team rigorously tests all products and systems to ensure compliance with the highest safety and reliability standards. Through thorough inspections and assessments, they guarantee that every solution we deliver is dependable and of the highest quality.



TRAINING COORDINATORS

Our training coordinators develop and deliver comprehensive training programs designed to equip client personnel with the skills necessary for effective operation and maintenance of systems. We believe that empowering our clients with knowledge leads to long-term success, and our training programs reflect this commitment.

CEO's Message

As the CEO of Power & Control House (PCH), I am incredibly proud to lead a team of dedicated professionals who are passionate about delivering exceptional electrical solutions. Our mission is simple: to empower you, our clients, by providing innovative, reliable, and efficient control systems that enhance your productivity and safety. We invest in the latest technologies and training to stay at the forefront of industry trends, ensuring you receive the highest level of service. At PCH, we see ourselves as more than just a service provider – we are your partners in progress. Our goal is to build long-lasting relationships and provide you with peace of mind, knowing that your electrical systems are in capable hands. Together, we can build a brighter, more efficient future.



Industries We Serve

At Power & Control House (PCH), we pride ourselves on our ability to cater to a wide array of industries, providing tailored solutions that meet the unique requirements of each sector:



INDUSTRIAL

We serve manufacturing plants, steel mills, oil & gas facilities, and mining operations with robust and reliable electrical solutions that ensure smooth and efficient operations.



COMMERCIAL

Our expertise extends to office complexes, malls, hotels, and data centers, where we deliver cutting-edge systems that enhance productivity, safety, and comfort for our clients.



INFRASTRUCTURE

From airports and metro systems to railways, hospitals, and stadiums, our advanced electrical control and distribution solutions help drive progress and innovation in critical infrastructure projects.



RENEWABLE ENERGY

We are committed to supporting the transition to sustainable energy with our solutions for solar farms, wind power projects, and hybrid energy systems, contributing to a greener and more sustainable future.



UTILITIES

Our comprehensive solutions for power generation plants, substations, and water treatment facilities ensure reliable and efficient operation, meeting the highest standards of performance and safety.



What We Offer

At Power & Control House (PCH), we pride ourselves on providing a comprehensive range of products and services designed to meet the diverse needs of our clients. Our offerings are crafted with precision and care to ensure the highest standards of quality, safety, and efficiency.

Our Products

1. POWER DISTRIBUTION PANELS →

SWITCHGEAR PANELS
SUB DISTRIBUTION BOARDS (SDB)
FEEDER PILLARS
DISTRIBUTION PANELS DB

2. CONTROL PANELS →

MOTOR CONTROL CENTERS (MCC)
VARIABLE FREQUENCY DRIVE (VFD) PANELS
SOFT STARTER PANELS
CAPACITOR BANKS & POWER FACTOR CORRECTION PANELS
AUTOMATIC TRANSFER SWITCH (ATS) PANELS
SYNCHRONIZING PANELS

3. LIGHTING CONTROL PANELS →

4. AUTOMATION PANELS →

PROGRAMMABLE LOGIC CONTROLLER (PLC) PANELS
REMOTE I/O PANELS
SCADA-INTEGRATED PANELS
DDC CONTROL PANEL

5. PACKAGE SUBSTATIONS →

6. CUSTOM PANELS →



1 Power Distribution Panels

- 1.1 MAIN DISTRIBUTION PANELS (MDB)
- 1.2 SUB DISTRIBUTION BOARDS (SDB)
- 1.3 FEEDER PILLARS
- 1.4 DISTRIBUTION PANELS DB

1.1

MAIN DISTRIBUTION PANELS (MDB)

General specs for this subject :

1. Rating up to 6300 A
2. Type of separation, Form 1, Form 2, Form 3, Form 4
3. Withdrawable & fixed type
4. Top and bottom entry
5. IP protection up to 65 (Indoor & Outdoor)
6. Full type tested panels as per IEC61439

Central hubs for electrical systems, MDBs provide reliable power distribution throughout a facility. They connect various electrical services and components, ensuring the efficient management of power from the main incoming source to subsidiary circuits. Equipped with circuit breakers, safety switches, and surge protection devices, MDBs are essential for maintaining system safety and efficiency.



1 Power Distribution Panels

- 1.1 SWITCHGEAR PANELS
- 1.2 SUB DISTRIBUTION BOARDS (SDB)
- 1.3 FEEDER PILLARS
- 1.4 DISTRIBUTION PANELS DB

1.2

SUB DISTRIBUTION BOARDS (SDB)

General specs for this subject :

1. Rating up to 32000 A
2. Type of separation, Form 1, Form 2, Form 3, Form 4
3. Top and bottom entry
4. IP protection up to 65 (Indoor & Outdoor)

SDBs adapt to various electrical installations in commercial and light industrial premises. Made from high-quality sheet steel, they ensure maximum safety, functionality, and flexibility. SDBs are suitable for both indoor and outdoor applications and comply with IEC standards, providing a centralized point for distributing electrical power to different circuits within a building.



1. Power Distribution Panels

- 1.1 SWITCHGEAR PANELS
- 1.2 SUB DISTRIBUTION BOARDS (SDB)
- 1.3 FEEDER PILLARS
- 1.4 DISTRIBUTION PANELS DB

1.3

FEEDER PILLARS

Essential components in electrical distribution systems, feeder pillars offer a robust and secure method for distributing power to various parts of a facility. Typically installed at load centers, they handle high volumes of power, ensuring consistent voltage levels across the area. Feeder pillars are made from durable materials, designed for ease of maintenance and sufficient cooling.

1.4

DISTRIBUTION PANELS DB

Distribution Panels DB's the distribution panels that feeds the final load, below specs :

- Enclosure with BB rating up to 250A
- Protection class up to IP41
- Control lighting load through contactors, timers, photocell.
- Smart lighting solutions for integrated systems BMS



2. Control Panels

- 2.1 MOTOR CONTROL CENTERS (MCC)
- 2.2 VARIABLE FREQUENCY DRIVE (VFD) PANELS
- 2.3 SOFT STARTER PANELS
- 2.4 CAPACITOR BANKS & POWER FACTOR CORRECTION PANELS
- 2.5 AUTOMATIC TRANSFER SWITCH (ATS) PANELS
- 2.6 SYNCHRONIZING PANELS

2.1 MOTOR CONTROL CENTERS (MCC)

General specs for this subject :

1. Rating up to 6300 A
2. Withdrawable & fixed type
3. Top and bottom entry
4. IP protection up to 54 (Indoor & Outdoor)
5. Controlled motors through VFD, Softstarter, Star/delta, direct online.

Designed for controlling and protecting motor circuits, MCCs are essential for industrial operations. They house various motor control units, including starters, contactors, and overload protection devices, ensuring efficient motor management and operation.

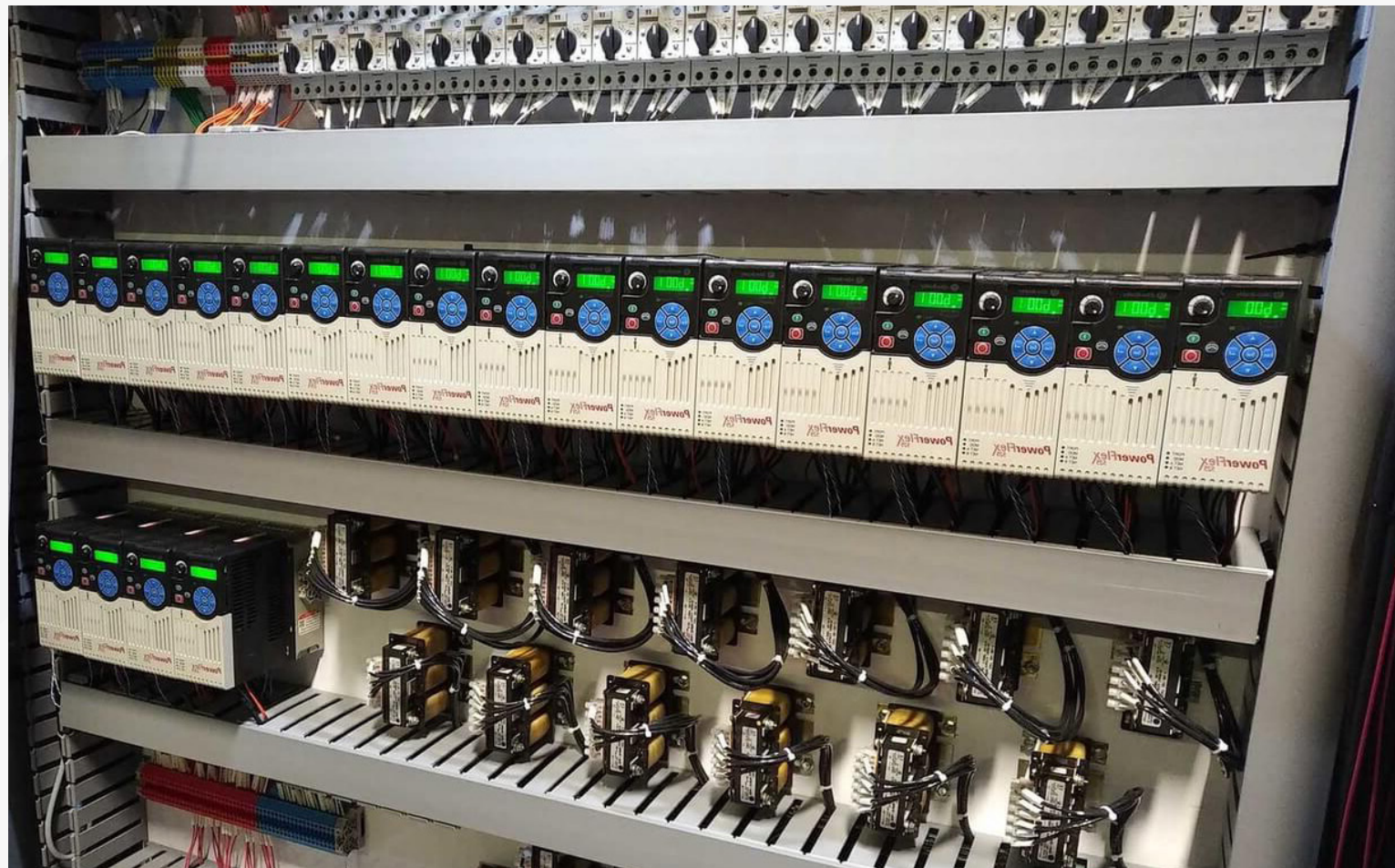


2. Control Panels

- 2.1 MOTOR CONTROL CENTERS (MCC)
- 2.2 VARIABLE FREQUENCY DRIVE (VFD) PANELS
- 2.3 SOFT STARTER PANELS
- 2.4 CAPACITOR BANKS & POWER FACTOR CORRECTION PANELS
- 2.5 AUTOMATIC TRANSFER SWITCH (ATS) PANELS
- 2.6 SYNCHRONIZING PANELS

2.2 VARIABLE FREQUENCY DRIVE (VFD) PANELS

VFD panels regulate motor speed and torque, providing energy-efficient solutions for various applications. By adjusting the frequency and voltage supplied to motors, they enhance performance and reduce energy consumption, contributing to cost savings and improved operational efficiency.



2. Control Panels

- 2.1 MOTOR CONTROL CENTERS (MCC)
- 2.2 VARIABLE FREQUENCY DRIVE (VFD) PANELS
- 2.3 **SOFT STARTER PANELS**
- 2.4 CAPACITOR BANKS & POWER FACTOR CORRECTION PANELS
- 2.5 AUTOMATIC TRANSFER SWITCH (ATS) PANELS
- 2.6 SYNCHRONIZING PANELS

2.3

SOFT STARTER PANELS

These panels reduce inrush current and mechanical stress on motors during startup, prolonging motor life and reducing maintenance requirements. Soft starters provide a smooth and gradual increase in motor speed, enhancing overall system performance.



2. Control Panels

- 2.1 MOTOR CONTROL CENTERS (MCC)
- 2.2 VARIABLE FREQUENCY DRIVE (VFD) PANELS
- 2.3 SOFT STARTER PANELS
- 2.4 CAPACITOR BANKS & POWER FACTOR CORRECTION PANELS
- 2.5 AUTOMATIC TRANSFER SWITCH (ATS) PANELS
- 2.6 SYNCHRONIZING PANELS

2.4

CAPACITOR BANKS AND POWER FACTOR CORRECTION PANELS

Capacitor bank panels that improves the power factor by adding capacitors in steps as per power factor calculations, applicable for commercial and industrial installations having large scaled electrical loads.

- Rating up to 1000 KVAR
- Power factor controller
- Capacitor and reactors
- Special contactors



2. Control Panels

- 2.1 MOTOR CONTROL CENTERS (MCC)
- 2.2 VARIABLE FREQUENCY DRIVE (VFD) PANELS
- 2.3 SOFT STARTER PANELS
- 2.4 CAPACITOR BANKS & POWER FACTOR CORRECTION PANELS
- 2.5 **AUTOMATIC TRANSFER SWITCH (ATS) PANELS**
- 2.6 SYNCHRONIZING PANELS



2.5

AUTOMATIC TRANSFER SWITCH (ATS) PANELS

General specs for this subject :

1. Rating up to 6300 A
2. Automatic transfer switch controller
3. Protection Class up to IP54.
4. Available in 3 or 4 poles with manual transfer switch (MTS)

ATS panels ensure seamless power transfer in case of power outages, providing uninterrupted power supply to critical loads. They automatically switch between primary and backup power sources, ensuring continuous operation.

2. Control Panels

- 2.1 MOTOR CONTROL CENTERS (MCC)
- 2.2 VARIABLE FREQUENCY DRIVE (VFD) PANELS
- 2.3 SOFT STARTER PANELS
- 2.4 CAPACITOR BANKS & POWER FACTOR CORRECTION PANELS
- 2.5 AUTOMATIC TRANSFER SWITCH (ATS) PANELS
- 2.6 SYNCHRONIZING PANELS

2.6 SYNCHRONIZING PANELS

General specs for this subject :

1. Rating up to 6300 A
2. Type of separation, Form 1, Form 2, Form 3, Form 4
3. With-drawable & fixed type
4. Top and bottom entry
5. IP protection up to 65 (Indoor & Outdoor)
6. Special controllers for controlling breakers as per sequence of operations.

These panels coordinate multiple power sources, ensuring optimal performance and stability. By synchronizing generators and other power sources, they provide reliable and consistent power supply, crucial for applications requiring high availability.



3. Lighting Control Panels

3.1 AUTOMATED AND SMART LIGHTING SYSTEMS

Designed for energy efficiency, these systems offer advanced control over lighting operations. Automated and smart lighting solutions enhance comfort, reduce energy consumption, and provide flexible lighting options tailored to various environments.

Distribution Panels DB's the distribution panels that feeds the final load, below specs :

- Enclosure with BB rating up to 250A
- Protection class up to IP41
- Control lighting load through contactors, timers, photocell.
- Smart lighting solutions for integrated systems BMS



4. Automation Panels

- 4.1 PROGRAMMABLE LOGIC CONTROLLER (PLC) PANELS
- 4.2 REMOTE I/O PANELS
- 4.3 SCADA-INTEGRATED PANELS
- 4.4 DDC CONTROL PANEL



4.1

PROGRAMMABLE LOGIC CONTROLLER (PLC) PANELS

PLC panels are advanced control systems for automation applications, providing reliable and flexible control over industrial processes. They integrate seamlessly with other systems, offering precise and efficient control.

4. Automation Panels

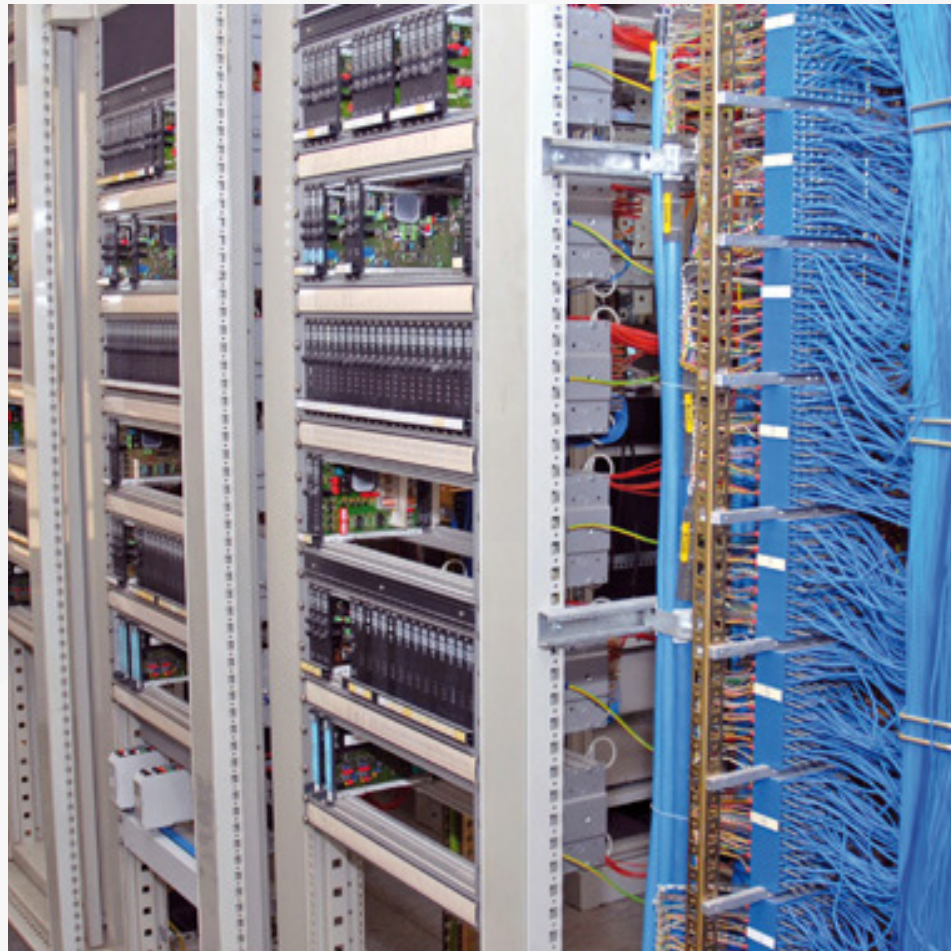
- 4.1 PROGRAMMABLE LOGIC CONTROLLER (PLC) PANELS
- 4.2 REMOTE I/O PANELS
- 4.3 SCADA-INTEGRATED PANELS
- 4.4 DDC CONTROL PANEL



4.2

REMOTE I/O PANELS

Expanding control capabilities with remote input/output solutions, these panels allow for decentralized control and monitoring of various processes. They provide flexibility and scalability, essential for modern industrial operations.



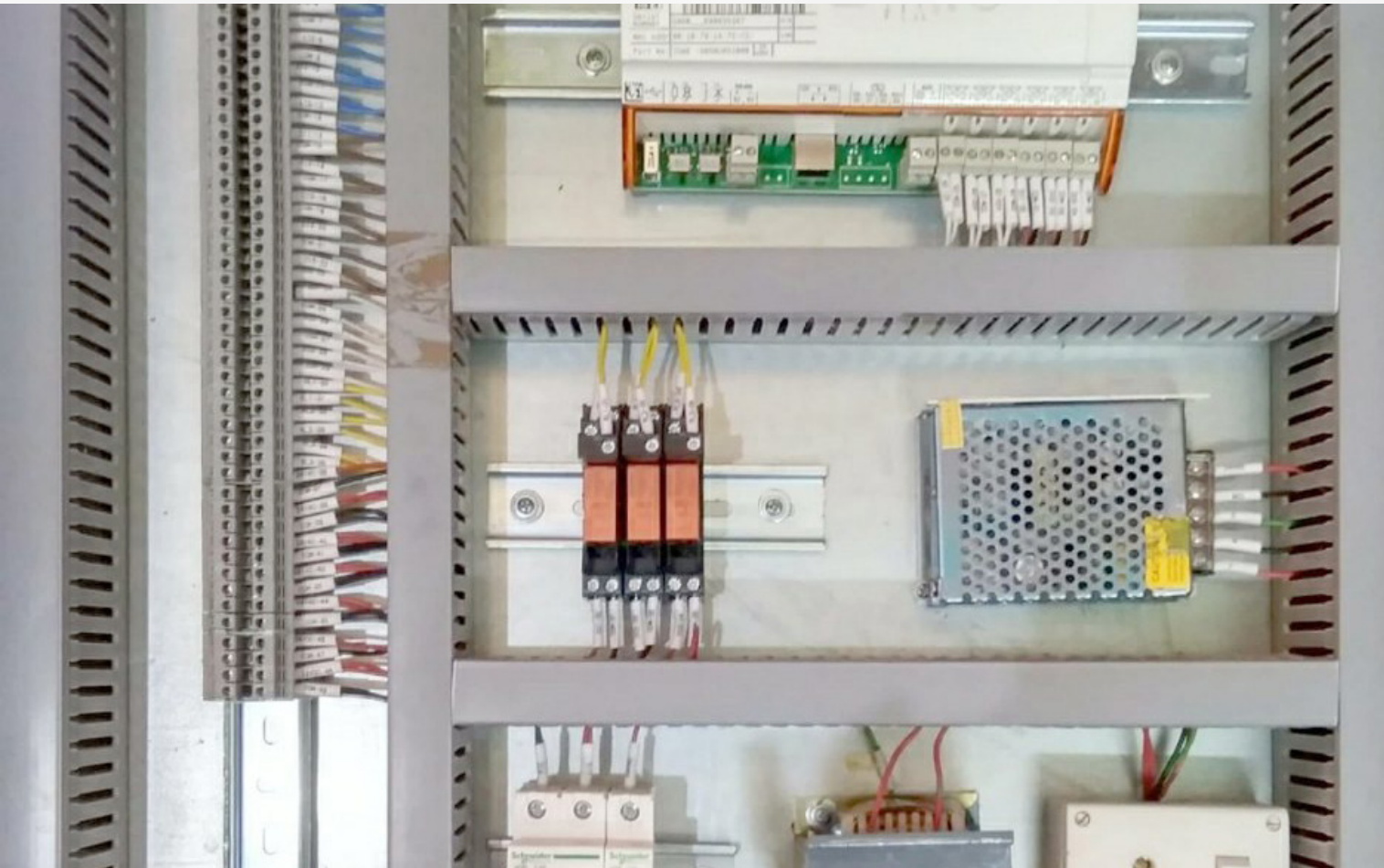
4.3

SCADA-INTEGRATED PANELS

Integrating Supervisory Control and Data Acquisition (SCADA) systems, these panels offer comprehensive monitoring and control. SCADA-integrated panels enable real-time data collection and analysis, enhancing decision-making and operational efficiency.

4. Automation Panels

- 4.1 PROGRAMMABLE LOGIC CONTROLLER (PLC) PANELS
- 4.2 REMOTE I/O PANELS
- 4.3 SCADA-INTEGRATED PANELS
- 4.4 DDC CONTROL PANEL



4.4

DDC CONTROL PANEL

Pudio volorepudam re videm
harcipsam, que re eum aut lant et
et lam eumquam, od eum, quae
niam ipsandu ciminctem. Et aute
num nobis repel ideseque dici re
rem res si ut accusti net et unto
dolorro dercimusam, vollabo
rempos ut amendus cus.

5. Package Substations

5.1 COMPACT SOLUTIONS

General specs for this subject :

1. Rating up to 4000KVA and 6300A breaker
2. Protection Class IP65 (Outdoor)
3. Bottom entry for MV & LV cables
4. Includes Transformer, RMU & LV Section.

Combining transformers, Ring Main Units (RMU), LV Panels, and control systems, package substations offer efficient power distribution in a compact footprint. They provide a complete solution for managing electrical power, suitable for various applications.



6. Custom Panels

6.1 TAILORED DESIGNS

Specific solutions for industries such as HVAC control, solar power, and oil & gas, custom panels are designed to meet unique operational requirements. We offer custom manufacturing for existing live equipment and necessary modifications for expansion projects, ensuring optimal performance and reliability.



PCH Factory Expertise



01

**DESIGN
EXPERTISE**



02

**MANUFACTURING
EXCELLENCE**



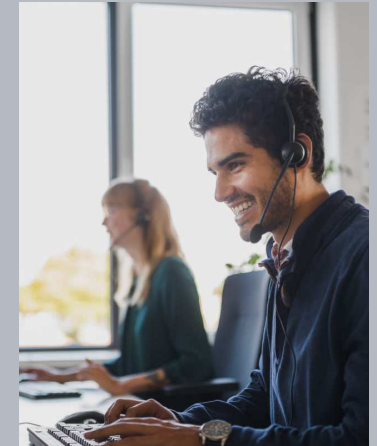
03

**TESTING
AND QUALITY
ASSURANCE**



04

**INSTALLATION &
COMMISSIONING**



05

**AFTER-SALES
SUPPORT**

PCH Factory Expertise



01

DESIGN EXPERTISE

Innovative Solutions:
Our experienced design team offers creative and cost-effective electrical solutions.

Precision Engineering:
Utilizing advanced CAD and simulation tools for accurate and reliable designs.

Comprehensive Services:

Including schematic drawings and electrical studies to support your projects.

02

MANUFACTURING EXCELLENCE

State-of-the-Art Facilities:
Equipped with the latest machinery and stringent quality control systems.

High-Grade Materials:
Using top-quality components sourced from globally trusted brands.

03

TESTING AND QUALITY ASSURANCE

Rigorous Testing:
Ensuring compliance with international standards and delivering dependable solutions.

Routine & Type-Testing:
Providing critical application solutions that meet the highest standards of safety and reliability.

04

INSTALLATION & COMMISSIONING

Expert Team:
Dedicated to seamless on-site installation and system integration for a smooth transition.

05

AFTER-SALES SUPPORT

Comprehensive Maintenance:
Offering troubleshooting, repair services, and ongoing support to ensure continued operational efficiency.

Our Process

At Power & Control House (PCH), we pride ourselves on delivering seamless and efficient project execution from initial contact to completion. Our structured process ensures clear communication, timely delivery, and exceptional quality at every stage. Here's how we work:



1. Initial Contact and Consultation



TIMELINE:

1-2 weeks



PROFESSIONALS INVOLVED:

- ⊕ Sales Representatives
- ⊕ Technical Advisors

Our journey begins when you contact us with your project requirements. Our sales representatives and technical advisors will arrange a consultation to understand your needs, objectives, and challenges. During this phase, we gather all necessary information and provide initial recommendations based on our expertise.

2. Project Proposal and Design



TIMELINE:

1-2 weeks



PROFESSIONALS INVOLVED:

- ⊕ Project Managers
- ⊕ Electrical Engineers
- ⊕ Design Team

After the consultation, our project managers and design team will develop a detailed project proposal. This includes technical specifications, design concepts, timelines, and cost estimates. Our electrical engineers utilize advanced CAD and simulation tools to create precise and innovative designs tailored to your industrial needs.

3. Approval and Planning



TIMELINE:

1-2 weeks



PROFESSIONALS INVOLVED:

- ⊕ Project Managers
- ⊕ Client Representatives

Once the proposal is finalized, we present it to you for approval. Our project managers collaborate closely with your representatives to address any queries and refine the plans. Upon approval, we outline a detailed project plan, including milestones, deliverables, and timelines.

4. Manufacturing and Quality Assurance



TIMELINE:

4-6 weeks



PROFESSIONALS INVOLVED:

- ⊕ Manufacturing Team
- ⊕ Quality Assurance Professionals

Our state-of-the-art manufacturing facility is equipped with cutting-edge machinery to produce high-quality electrical panels and control systems. Our quality assurance team rigorously tests each component to ensure compliance with international standards. This phase includes routine and type-testing to guarantee reliability and safety.

5. Delivery and Installation



TIMELINE:

2-4 weeks



PROFESSIONALS INVOLVED:

- ⊕ Logistics Coordinators
- ⊕ Installation Technicians
- ⊕ Site Supervisors

Once the proposal is finalized, we present it to you for approval. Our project managers collaborate closely with your representatives to address any queries and refine the plans. Upon approval, we outline a detailed project plan, including milestones, deliverables, and timelines.

6. Commissioning and Handover



TIMELINE:

1-2 weeks



PROFESSIONALS INVOLVED:

- ⊕ Commissioning Engineers
- ⊕ Client Representatives

Our commissioning engineers conduct thorough testing and verification to ensure that all systems are functioning optimally. We provide comprehensive training to your personnel on the operation and maintenance of the installed systems. Once everything is in order, we officially hand over the project to you.

7. After-Sales Support



TIMELINE:

Ongoing



PROFESSIONALS INVOLVED:

- ⊕ Customer Service Representatives
- ⊕ Maintenance Technicians

Our commitment to you doesn't end with the project handover. We offer extensive after-sales support, including maintenance, troubleshooting, and repair services. Our customer service team is always available to address any concerns and ensure the continued operational efficiency of your systems.



Certifications



ISO 9001: QUALITY MANAGEMENT SYSTEM

Achieving the ISO 9001 certification was a significant milestone for Power & Control House (PCH). Our journey began with a comprehensive assessment of our existing quality management processes. We identified areas for improvement and implemented rigorous quality control measures across all departments. Our dedicated team underwent extensive training to ensure compliance with international standards. After a series of audits and evaluations, we proudly received the ISO 9001 certification, reflecting our unwavering commitment to delivering exceptional quality and continuous improvement in all aspects of our operations.



ISO 14001: ENVIRONMENTAL MANAGEMENT SYSTEM

At PCH, we are committed to sustainability and minimizing our environmental impact. To achieve the ISO 14001 certification, we embarked on a mission to enhance our environmental management practices. This involved conducting thorough environmental impact assessments and implementing sustainable processes in our manufacturing facility. We introduced waste reduction programs, energy-efficient technologies, and eco-friendly materials. Our employees received training on environmental awareness and best practices. Through diligent efforts and adherence to stringent standards, we successfully obtained the ISO 14001 certification, demonstrating our dedication to environmental stewardship.



OHSAS 18001: OCCUPATIONAL HEALTH AND SAFETY

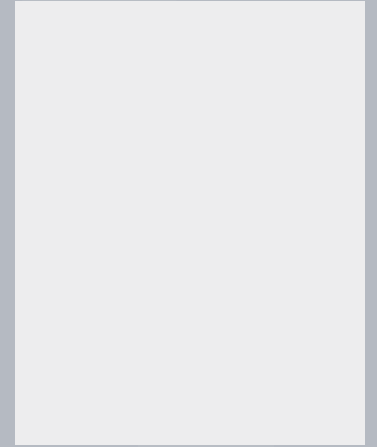
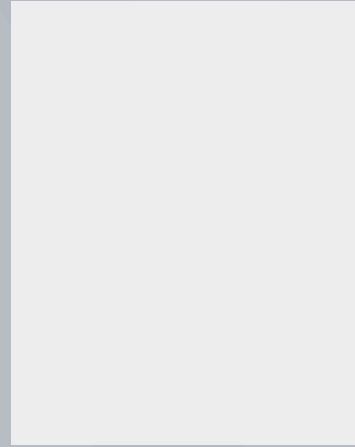
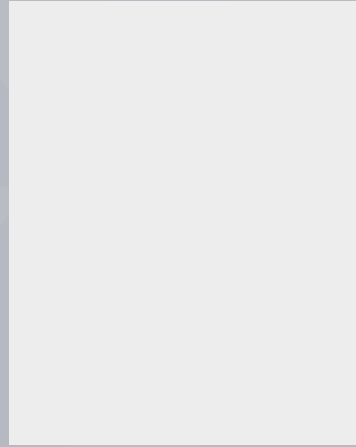
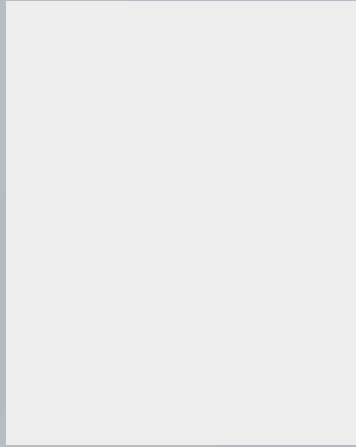
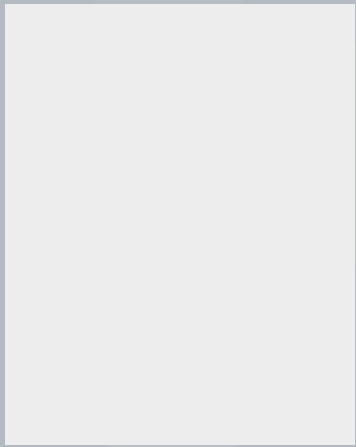
Ensuring the health and safety of our employees is a top priority at PCH. The journey to obtain the OHSAS 18001 certification involved a comprehensive overhaul of our health and safety management system. We conducted risk assessments, developed safety protocols, and provided extensive training to our workforce. Our safety committee regularly monitors and reviews safety practices to ensure compliance with industry regulations. After rigorous audits and evaluations, we achieved the OHSAS 18001 certification, reaffirming our commitment to creating a safe and healthy work environment for all our employees.

Why Us

At Power & Control House (PCH), we are dedicated to powering progress, together. Our commitment to excellence, innovation, and customer satisfaction sets us apart in the industry. Here's why you should choose us for your electrical and control panel needs:



Our Government Documents



DOC #1

DOC #2

DOC #3

DOC #4

DOC #5

TITTLE OF
DOCUMENT

TITTLE OF
DOCUMENT

TITTLE OF
DOCUMENT

TITTLE OF
DOCUMENT

TITTLE OF
DOCUMENT

Client Approvals

CLIENT NAME:

PROFESSIONAL INFO:

⊕ Maintenance Technicians

Elecatet que moluptae si dolor resedis cidelen totasperia desequi
il ium dolecaecab ipidi ipit archil iunto ides excessita dolorum
quos peliquiam quam, sande nonest doluptibus expeditias.

CLIENT NAME:

PROFESSIONAL INFO:

⊕ Customer Service
Representatives

Elecatet que moluptae si dolor resedis cidelen totasperia desequi
il ium dolecaecab ipidi ipit archil iunto ides excessita dolorum
quos peliquiam quam, sande nonest doluptibus.

CLIENT NAME:

PROFESSIONAL INFO:

⊕ Maintenance Technicians

Elecatet que moluptae si dolor resedis cidelen totasperia desequi
il ium dolecaecab ipidi ipit archil iunto ides excessita dolorum
quos peliquiam quam, sande nonest doluptibus .

CLIENT NAME:

PROFESSIONAL INFO:

⊕ Customer Service
Representatives

Elecatet que moluptae si dolor resedis cidelen totasperia desequi
il ium dolecaecab ipidi ipit archil iunto ides excessita dolorum
quos peliquiam quam, sande nonest doluptibus expeditias .

Our Values



INNOVATION AND EXCELLENCE

We continually invest in cutting-edge technology and training to ensure our solutions are at the forefront of industry trends. Our team of skilled professionals is committed to delivering innovative and high-quality solutions that exceed expectations.



CLIENT-CENTRIC APPROACH

We see ourselves as your partners in progress. Our client-centric approach ensures that we understand your unique needs and tailor our solutions to meet your specific requirements. Your success is our priority.



RELIABILITY AND SAFETY

Safety and reliability are the cornerstones of our operations. We adhere to the highest standards of safety and quality, ensuring that our products and services provide you with peace of mind and dependable performance.



SUSTAINABILITY & RESPONSIBILITY

We are committed to minimizing our environmental impact through sustainable practices and eco-friendly solutions. Our dedication to sustainability ensures that we contribute positively to the communities we serve.



COMPREHENSIVE SUPPORT

Our support doesn't end with project completion. We offer extensive after-sales support, including maintenance, troubleshooting, and repair services, to ensure your systems continue to operate efficiently.



EXPERTISE AND EXPERIENCE

With decades of cumulative industry experience, our team brings a wealth of knowledge and expertise to every project. We tackle complex challenges with precision and care, ensuring the highest standards of performance and reliability.

Powering Progress, Together



In choosing Power & Control House (PCH), you are not just selecting a service provider—you are gaining a dedicated partner committed to your success. Our innovative solutions, unwavering reliability, and steadfast support ensure that we meet your needs at every step of the way.

Join us on our journey to a brighter, more efficient future. Let's power progress, together. Driving Efficiency with Every Panel We Build. Precision in Power, Reliability in Control.

I hope this provides a strong and persuasive closing to your company profile. Let me know if you need any further adjustments or additions!



Al Riyadh – Saudi Arabia
CR: 1009174695

Mob: 966559301813
Email: info@pch-ksa.com

P.O. Box: Al Riyadh 14274
Web: www.pch-ksa.com

